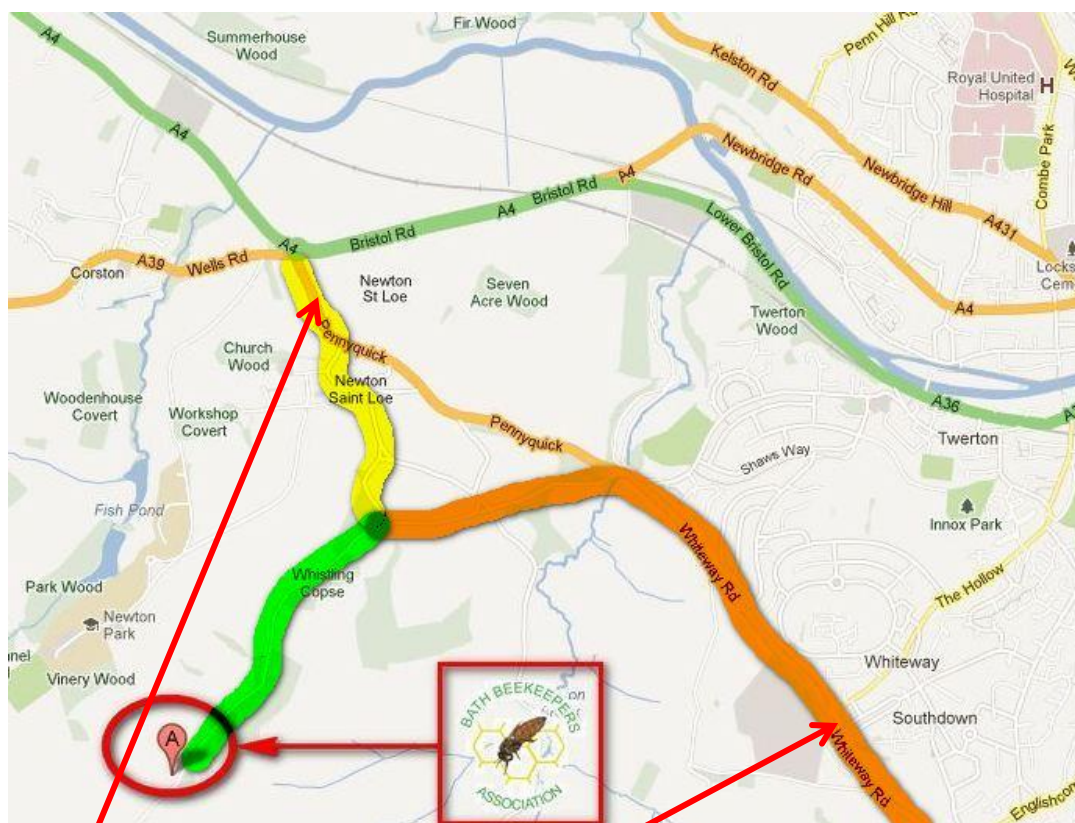


Our Teaching Apiary is located on Park Farm, Newton-St-Loe, Bath. BA2 9JA. From Bath City Centre:

- Leave Bath on the A4 (or the A36—they merge) in the direction of Bristol.
- At the end of the dual carriageway, at 'The Globe Inn' roundabout take the 1st exit, towards Newton-St-Loe.
- Take first right to Newton St Loe village, left at top of hill, then keep right through village and out to join road across top to Park Farm.
- Turn right into Park Farm and then immediately left keeping the barn on your right. Our T.A. is the wooden building at the end of the barn.

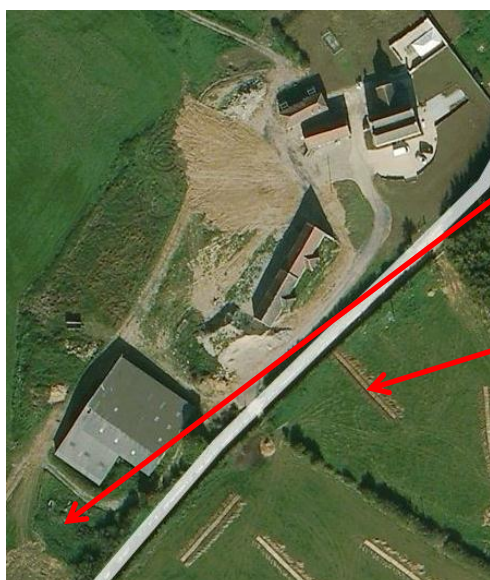
Map view



[Route from A4](#)

[From Rush Hill/Combe Down \(A367\)](#)

Satellite View of Site



Apiary Site

New barns here

From A4

Turn off A4 up Pennyquick, keeping Globe pub to your right



First Right off Pennyquick towards newton St Loe



Keep left at top of this road



Past the tree in the village centre



Past Newton St Loe Farm Shop, keep right



Keep right here, you don't want to go left, that's a B&B!



You'll eventually come to the top of the hill, where you will join the road across the top, give way!



Then just under a mile to Park Farm which is on the right, turn off road, then immediately left through gate. It's the first set of buildings you come to on this road. There are several new barns opposite.



From Rush Hill/Combe Down (A367)

At A367 junction with A3062, take left onto Frome Rd (keeping Red Lion pub to your left)



At next roundabout, bear right onto Rush Hill, stay on this road as it changes to Whiteway Rd



Then at just over a mile and a half later take the first left after these signs



Turn left here



Straight across this crossroads (but don't forget to give way!)



Then just under a mile to Park Farm which is on the right, turn off road, then immediately left through gate. It's the first set of buildings you come to on this road. There are several new barns opposite.



Parking

Please park only in areas shown, not in any other area of the farm grounds.



Public Transport

Unfortunately there is no bus directly to either Park Farm or Newton St Loe. There are the 2 options below to get you in the general vicinity, but it will be a long walk after getting off the bus.

First Bus operates the [service 15](#) between Bath city centre and the Newton Park campus via Oldfield Park, Windsor Bridge and Newbridge Road. This service operates every 15 minutes throughout the peak daytime periods in both directions.

First Bus also operates [X39/338/339](#) between the bus station in Bath city centre and the Globe roundabout. From there, you can catch the Service 15 up the drive without needing to buy another ticket... just present your X39 or 337 ticket to the driver.

There is a footpath from the Bath Spa campus starting by our old site if you choose to go this route:

Old Apiary

Footpath

New Apiary

